

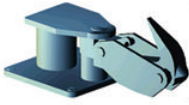








Z Series Quick Release Hook System

- Available in 1 to 6 hooks, standard or back to back (B Models)
- Modular hook design, counter balanced, 45T-300T SWL Per Hook
- Hook elevates in vertical plane to accommodate mooring line with up to 60 degree inclination
- Manual release / safety lock standard on all models
- Mooring load monitoring - release automation ready
- Optional integrated capstan, custom designed for various working conditions (Refer to C series specification codes)
- Optional local / remote / network mooring load monitoring system
- Optional electric / electro - hydraulic / pneumatic actuators with local / remote / network release control system



Ordering Information

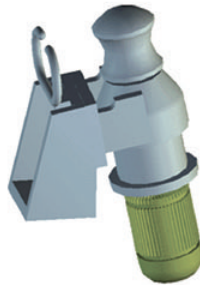
Assembly		Options	
	Z1: Single Hook	SWL Per Hook	0 - 300T
	Z2: Double Hook	Electric Classification	0: Non Hazardous 1: Class 1 Div. 1 2: Class 1 Div. 2
	Z3: Triple Hook	Integrated Capstan	0: Without Capstan 1: With Capstan
	Z4: Quadruple Hook	Release Actuator	E: Electric Actuator H: Hydro Electric Actuator P: Pneumatic Actuator
	Z4B: Quad Hook Back To Back	Release Control System	L: Local Control System R: Remote Control System N: Network Control System
	Z6: Quadruple Hook	Mooring Load Sensor	A: Analog Load Sensor D: Digital Load Sensor
	Z6B: Quad Hook Back To Back	Load Monitoring System	L: Local Control R: Remote Control N: Network Control

- Part Number: Assembly No. - SWL Per Hook - Electric Classification - Capstan Code - Release Actuator Code - Release Control System Code - Mooring Load Sensor Code - Mooring Load Monitoring System Code. Example: Model Z2-150-2-1-ERDN stands for 150T Double Hook Assembly in Class 1 Division 2 Zone with Integrated Capstan, Electric Release Actuators, Remote Release Control System, Digital Mooring Load Sensors, and Network Mooring Load Monitoring System
- Various options available for load monitoring and release control systems. Refer to Zalda MMCS monitoring & control platform literatures for more information
- Zalda offer customization for most Z series features. Contact us for details



C Series Marine Capstans

QRH Integrated
Capstan



Free Standing
Capstan



Line Pull (Kg)	Start Pull (Kg)	Required Motor Power (Kw @ 50Hz)				
		10m/min	15 m/min	20 m/min	25 m/min	30 m/min
1000	2000	2.2	3	4	4	5.5
1500	3000	3	4	5.5	7.5	7.5
2000	4000	4	5.5	7.5	11	11
2500	5000	5.5	7.5	11	11	15
3000	6000	5.5	7.5	11	15	18.5
4000	8000	7.5	11	15	18.5	22
5000	10000	11	15	22	22	30

Capstan Options: (To Be Specified By The Customer)

Start Line Pull Capacity		Foot Switch	
Continuous Line Pull Capacity		Space Heater	
Line Speed Capacity		Back Stop Device	
Available Power Supply		Brake Motor	
Area Classification (Class / Div / Zone)		Drum Diameter / Cable Capacity	
Protection (IP)		Cable Guide	

- Motor power based on standard 50 Hz motors running under 50 Hz power supply. 60 Hz motors are also available
- Standard 50 Hz motor runs under 60 Hz with different power. Consult us for changes in motor torque, line speed and motor power with your requirements
- Most features can be customized

Model Number Codes

Series	C		
Style	A – Integrated	B – Free Standing	
Line Pull (MT)	1 – 5		
Line Speed (m / min.)	10 – 30		
Hazardous Classification	A – Non Hazardous *	B – Class 1 Div. 2	C – Class 1 Div. 1
Protection	A – IP55 *	B – IP56	
Rotation	A – Single Direction *	B – Single Direction with Back Stop	C – Reversible
Motor Brake	A – Without *	B – With	
Foot Switch	A – Without *	B – With	
Motor Space Heater	A – Without *	B – With	
Control Box Space Heater	A – Without *	B – With	
Power Voltage (V)	220 – 660 (3 Ph)		
Power Frequency (Hz)	50 – 60		

- * Indicates Zalda Technology C Series standard
- Example: Model C-B-2-10-C-B-C-B-B-A-A-440-60 Stands For: Free standing capstan, with 2T (44000 lb / 20KN) Line Pull @ 10m / min (30fpm) line speed, Class 1 Div. 1 Classification, IP56 Protection, Reversible Motor with Brake, Foot Switch, without Space Heaters, 440V / 60Hz / 3Ph
- Most features can be customized

Z Series Quick Release Hook Specifications

Design Questionnaires

Administrative	Project Name
	Port / Country
	Contractor / Consultant
	Contact Tel. / E-mail :

Quick Release Hook / Release Automation / Load Monitoring Information

Assembly	<input type="checkbox"/> Single	<input type="checkbox"/> Double	<input type="checkbox"/> Triple	<input type="checkbox"/> Quad	<input type="checkbox"/> Quad B2B	<input type="checkbox"/> Sextuple	<input type="checkbox"/> Sextpl B2B
SWL / Hook	<input type="checkbox"/> _____ T	<input type="checkbox"/> _____ T	<input type="checkbox"/> _____ T	<input type="checkbox"/> _____ T	<input type="checkbox"/> _____ T	<input type="checkbox"/> _____ T	<input type="checkbox"/> _____ T
Quantity							
Foundation	<input type="checkbox"/> New <input type="checkbox"/> Existing			<input type="checkbox"/> Concrete <input type="checkbox"/> Steel <input type="checkbox"/> Bolt Pattern			
Classification	<input type="checkbox"/> Non Hazardous		<input type="checkbox"/> Class 1 Div. 1		<input type="checkbox"/> Class 1 Div. 2		
Release Ctrl	<input type="checkbox"/> Electric <input type="checkbox"/> Hydraulic <input type="checkbox"/> Pneumatic Actuator			<input type="checkbox"/> Local <input type="checkbox"/> Remote <input type="checkbox"/> Network			
Load Monitor	<input type="checkbox"/> Analog <input type="checkbox"/> Digital Sensor			<input type="checkbox"/> Local <input type="checkbox"/> Remote <input type="checkbox"/> Network			

Integrated Capstan Information

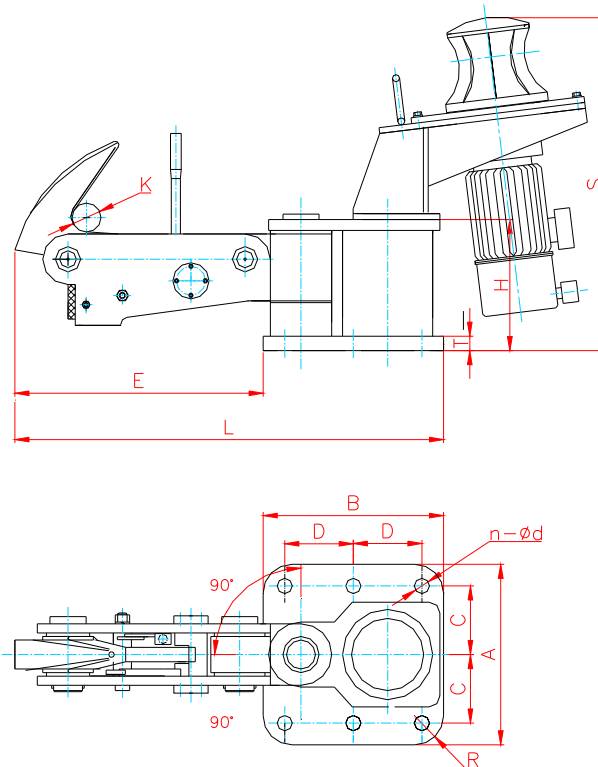
Line Pull	<input type="checkbox"/> 1 T	<input type="checkbox"/> 2 T	<input type="checkbox"/> 3 T	<input type="checkbox"/> 4 T	<input type="checkbox"/> 5 T	Other:
Start Pull	<input type="checkbox"/> 2 T	<input type="checkbox"/> 4 T	<input type="checkbox"/> 6 T	<input type="checkbox"/> 8 T	<input type="checkbox"/> 10 T	Other:
Line Speed	<input type="checkbox"/> 10 m / sec	<input type="checkbox"/> 15 m / sec	<input type="checkbox"/> 20 m / sec	<input type="checkbox"/> 25 m / sec	<input type="checkbox"/> 30 m / sec	Other:
Insulation	<input type="checkbox"/> IP55 <input type="checkbox"/> IP 56		Other:			
Rotation	<input type="checkbox"/> Single	<input type="checkbox"/> Single with Back Stop		<input type="checkbox"/> Reversible		
Motor Brake	<input type="checkbox"/> Without		<input type="checkbox"/> With			
Foot Switch	<input type="checkbox"/> Without		<input type="checkbox"/> With			
Space Heater	<input type="checkbox"/> Without		<input type="checkbox"/> With			
Power Supply	Voltage: ____	Phase: ____	Frequency: ____			

Additional Comments:

- Refer to cover sheets (page 1 and page 2) for more information on Z and C series options. Circle all relevant options, several options in one line if necessary. For example if you require local / remote / network release control system with electric actuator, circle "Electric", "Local", "Remote", and "Network" boxes
- Refer to Zalda MMCS monitoring / control platform literatures for more information on mooring load monitoring and mooring line release automation products.
- Most features can be customized.

Z Series Quick Release Hook Specifications

Z1 Single Quick Release Hook System Dimension Table



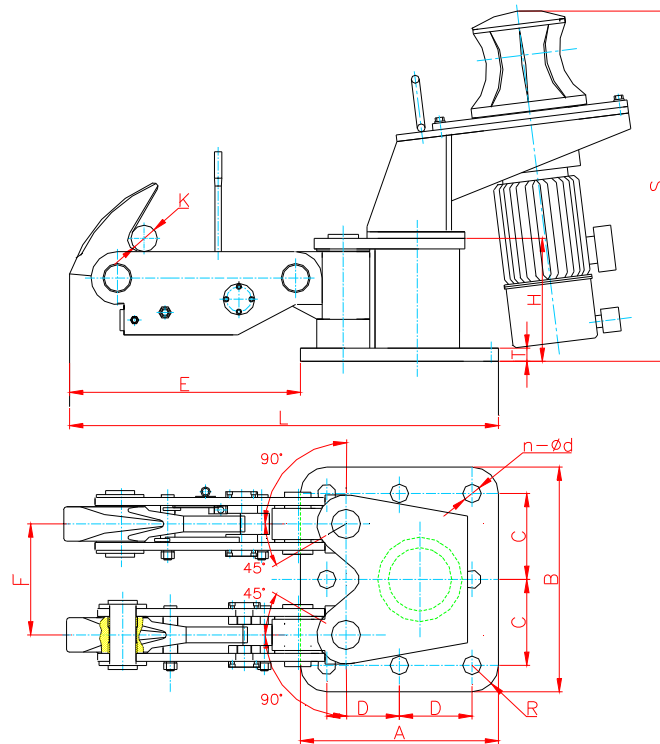
SWL (T)	MBC (T)	DIMENSIONS (mm)													Anchor Bolts (mm)	Wgt. (Kgs)
		A	B	C	D	T	H	E	L	K	n	d	R	S		
45	60	500	500	190	190	40	360	690	1190	150	6	48	80	1350	6-M42	430
60	75	650	650	225	225	45	420	750	1350	150	6	62	100	1350	6-M56	500
75	90	650	650	225	225	50	460	750	1350	150	6	62	100	1350	6-M56	580
100	125	750	650	250	225	60	480	950	1650	150	6	70	100	1350	6-M64	900
125	150	750	650	250	225	60	520	950	1650	150	6	70	100	1350	6-M64	1100
150	180	750	650	250	225	60	530	1130	2010	150	6	82	100	1350	6-M76	1460

- All dimensions in mm
- Capstan optional
- SWL listed are per hook. Multiply by hook numbers to get combined SWL for multiple hook systems
- MBC listed are Mounting Base Capacity
- Weights listed excluding weight for anchor bolt sets and capstan
- All weights and dimensions listed are subject to change without notice

Z Series Quick Release Hook Specifications

Z2 Double Quick Release Hook System

Dimension Table



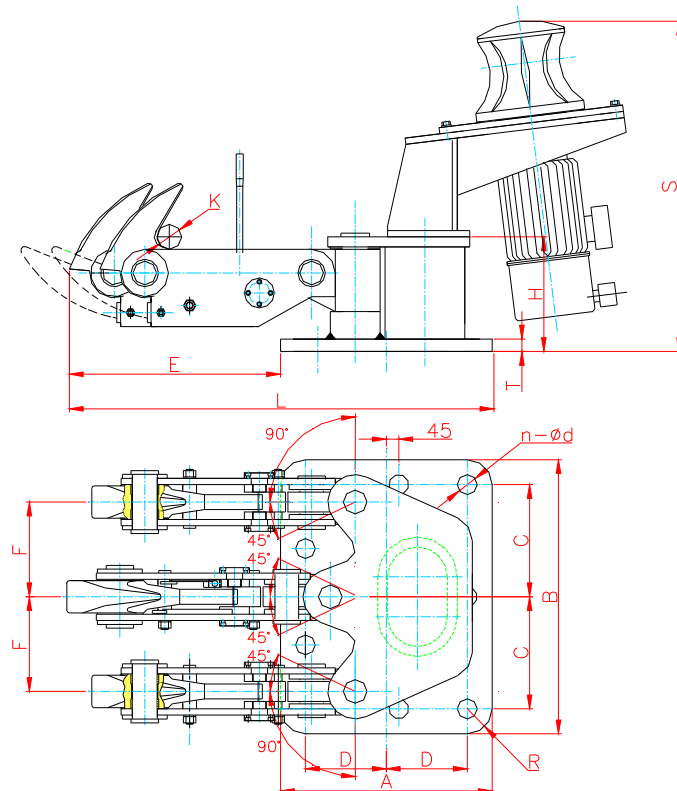
SWL (T)	MBC (T)	DIMENSIONS (mm)														Anchor Bolts (mm)	Wgt. (Kgs)
		A	B	C	D	E	F	T	H	L	K	R	S	N	d		
45	90	750	850	325	275	776	420	40	465	1526	150	100	1325	6	70	6-M64	1000
60	120	750	850	325	275	776	420	50	465	1526	150	100	1345	6	70	6-M64	1100
75	150	750	850	325	275	776	420	50	465	1526	150	100	1325	7	70	7-M64	1250
100	200	900	1100	450	350	1040	520	60	480	1940	150	100	1345	6	82	6-M76	2100
125	250	900	1100	450	350	1040	520	60	480	1940	150	100	1345	7	82	7-M76	2400
150	300	1000	1200	500	400	1010	520	60	490	2010	150	100	1345	7	82	7-M76	3100

- All dimensions in mm
- Capstan optional
- SWL listed are per hook. Multiply by hook numbers to get combined SWL for multiple hook systems
- MBC listed are Mounting Base Capacity
- Weights listed excluding weight for anchor bolt sets and capstan
- All weights and dimensions listed are subject to change without notice

Z Series Quick Release Hook Specifications

Z3 Triple Quick Release Hook System

Dimension Table



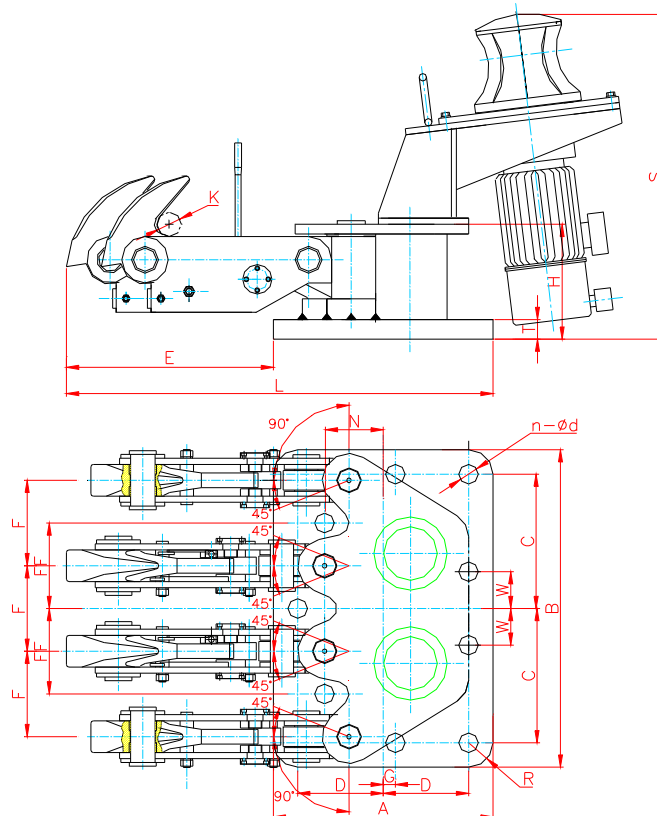
SWL (T)	MBC (T)	DIMENSIONS (mm)															Anchor Bolts (mm)	Wgt. (Kgs)
		A	B	C	D	E	F	T	H	L	K	R	S	n	d	G		
45	135	700	1000	400	250	765	325	40	398	1710	150	100	1350	6	70	0	6-M64	1070
60	180	850	1000	400	375	860	350	50	460	1710	150	100	1350	6	82	50	6-M76	1800
75	225	850	1100	450	375	860	380	50	460	1710	150	100	1350	6	82	50	6-M76	1880
100	300	1100	1300	550	500	1040	400	60	480	2140	150	100	1350	7	82	50	7-M76	3200
125	375	1100	1300	550	500	1050	420	60	500	2140	150	100	1350	8	82	0	8-M76	3600
150	450	1100	1400	600	500	1100	480	60	530	2200	150	100	1350	9	82	0	9-M76	4200

- All dimensions in mm
- Capstan optional
- SWL listed are per hook. Multiply by hook numbers to get combined SWL for multiple hook systems
- MBC listed are Mounting Base Capacity
- Weights listed excluding weight for anchor bolt sets and capstan
- All weights and dimensions listed are subject to change without notice

Z Series Quick Release Hook Specifications

Z4 Quadruple Quick Release Hook System

Dimension Table



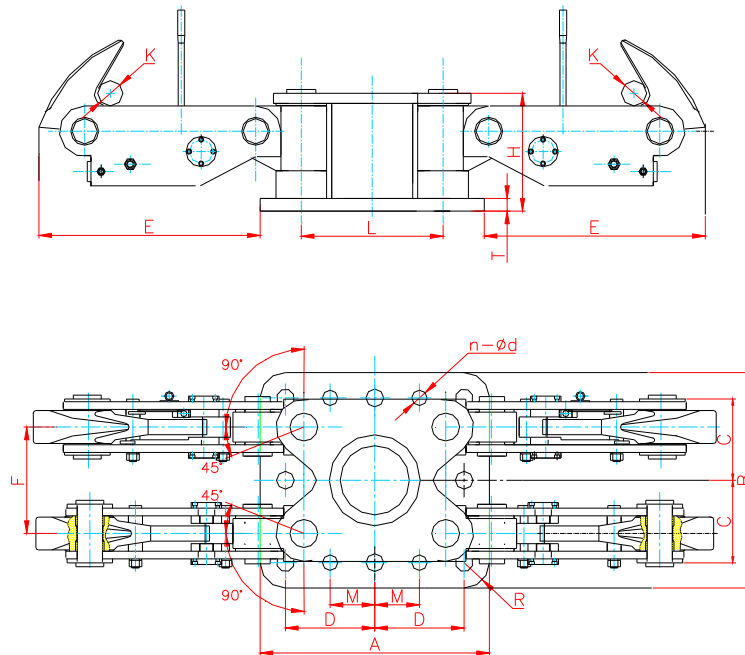
SWL (T)	MBC (T)	DIMENSIONS (mm)																		Anchor Bolts (mm)	Wgt. (Kgs)
		A	B	C	D	E	F	FF	G	H	K	L	N	R	S	T	W	n	d		
45	180	700	1175	487	250	765	300	300	50	398	150	1465	205	100	1350	45	200	9	62	9-M56	1580
60	240	900	1300	550	350	850	350	350	50	460	150	1750	240	100	1350	50	200	9	70	9-M64	2400
75	300	900	1820	550	350	850	350	350	50	460	150	1750	240	100	1350	50	200	9	78	9-M72	2480
100	400	1100	1820	810	450	1040	450	450	50	480	150	2140	310	100	1350	60	200	9	82	9-M76	4590
125	500	1100	1820	810	450	1040	450	450	50	480	150	2140	310	100	1350	60	200	9	82	9-M76	4800
150	600	1100	1880	840	450	1100	480	480	50	530	150	2200	320	100	1350	60	320	9	86	9-M80	5610

- All dimensions in mm
- Capstan optional
- SWL listed are per hook. Multiply by hook numbers to get combined SWL for multiple hook systems
- MBC listed are Mounting Base Capacity
- Weights listed excluding weight for anchor bolt sets and capstan
- All weights and dimensions listed are subject to change without notice

Z Series Quick Release Hook Specifications

Z4B Quadruple Quick Release Hook System

Dimension Table

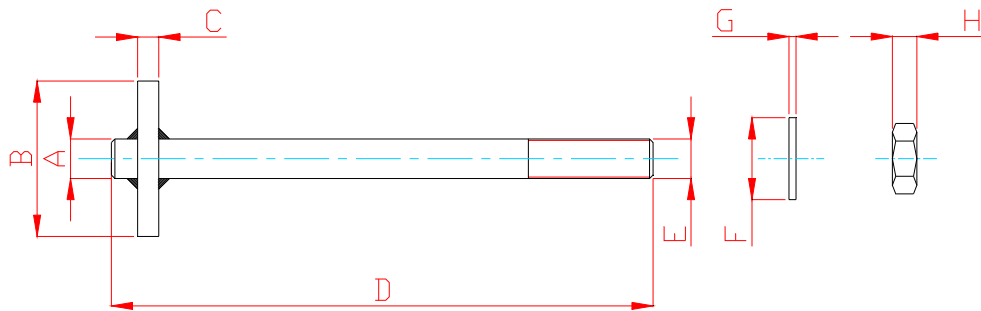


SWL (T)	MBC (T)	DIMENSIONS (mm)														Anchor Bolts (mm)	Wgt. (Kgs)
		A	B	C	D	E	F	T	H	K	L	M	R	n	d		
45	180	810	825	312	305	765	325	45	465	150	610		100	8	70	8-M64	1408
60	240	1060	850	325	430	776	420	50	465	150	560	155	100	10	70	10-M64	2100
75	300	1060	850	325	430	776	420	50	465	150	560	155	100	10	70	10-M64	2460
100	400	1120	1100	450	460	1010	520	60	480	150	600	300	100	10	82	10-M76	3620
125	500	1120	1100	450	460	1010	520	60	480	150	600	300	100	10	82	10-M76	4100
150	600	1300	1200	500	550	1040	520	60	480	150	680	180	100	10	86	10-M80	5230

- All dimensions in mm
- Capstan optional
- SWL listed are per hook. Multiply by hook numbers to get combined SWL for multiple hook systems
- MBC listed are Mounting Base Capacity
- Weights listed excluding weight for anchor bolt sets and capstan
- All weights and dimensions listed are subject to change without notice

Z Series Quick Release Hook Specifications

Z Series Anchor Bolt Dimension Table



TYPE A8	A	B	C	D	E	F	G	H	WGT (KGS)
M48	50	200 SQ	25	950	M48	90	8	38	25
M56	60	200 SQ	25	950	M56	105	8	45	32
M64	70	200 SQ	25	950	M64	115	10	50	40
M72	75	200 SQ	25	950	M72	115	10	60	43
M76	80	200 SQ	25	950	M76	135	10	60	48
M80	85	200 SQ	25	950	M80	135	10	70	50
M90	95	200 SQ	25	950	M90	160	12	70	63
M100	105	200 SQ	25	950	M100	175	12	80	78

- All dimensions in mm
- All weights and dimensions listed are subject to change without notice
- Can be customized to requirements.